

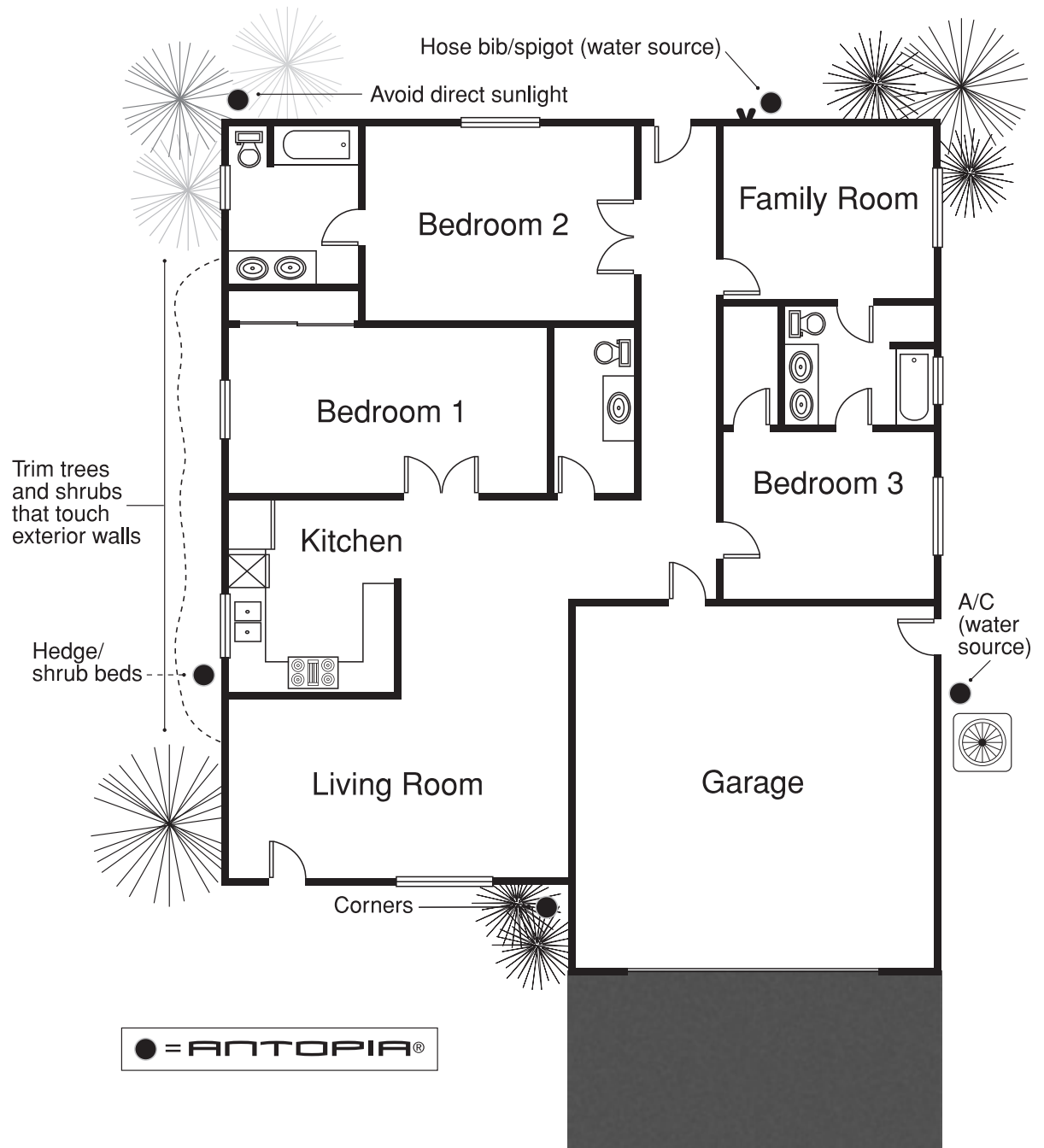
# ANTOPIA® BAIT STATION OPERATING & PLACEMENT INSTRUCTIONS

For best results place stations in shaded areas or create shade for the bait station. Avoid placing bait station where it will receive direct sunlight whenever possible.

- **For use around structures:** The number of bait stations to use will vary with the type of ant and the size of the colony.
- **For initial placement:** Place one bait station every fifty feet around the structure to be treated.
- If any of the bait stations is emptied in less than a week, double the initial placement. Replace baits as needed until feeding activity ceases.
- The preparations below will help to prevent damage to the bait station.

## ACTIVATION AND PLACEMENT

- Loosen the soil in the spot where you are going to place the station to width of about 3" and a depth of about 7" with a garden trowel or small shovel.
- Remove the seal at the end of the entry tube to expose the bait station entry.
- Place the anchor into the soil with a clockwise turning motion until the entryway is level with the soil. If you encounter difficulty in seating the bait station properly, remove it and loosen the soil more thoroughly, then repeat the anchoring process.
- Alternatively, dig a small hole to a depth of 7" and place the station in the hole, so that the entryway is level with the adjacent ground, and replace the soil.



# ANTOPIA® BAIT STATION OPERATING & PLACEMENT INSTRUCTIONS

## REUSING THE ANTOPIA® BAIT STATION:

If less than six months from first use, remove cap on top and add bait of the same type being used. If spill resistance is desired, fill station to approximately 7 fluid ounces. If spill resistance is not critical, fill the bait station to top of internal spiral (approximately 14 fluid ounces of bait).

If more than 6 months since first use or last cleaning, empty bait station completely, dispose of uneaten bait in accordance with label directions, fill bait station with mild bleach solution (1% chlorine) and allow to sit at least 1 hour; empty bait station and dispose of rinsate properly; rinse bait stations several times with water or mild soap and water solution, empty station, dispose of rinsate properly and allow station to dry. Replace lower seal, if station is to be transported while filled.

Add bait through top fill port to either 7 or 14 fluid ounce level, replace fill port cap and place station as directed on label.

**Telephone:** 561.483.4997

**Web Site:** antcafe.com

**Made in U.S.A.**



MANUFACTURED FOR:

# Innovative Pest Control Products

P.O. Box 880216  
Boca Raton, Florida 33488 U.S.A.